

Fast access to commands

Command mini toolbar (CMT)

The CMT opens when an element is pre-selected. It shows the most-likely commands for this element.

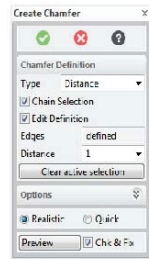


Option mini toolbar (OMT)

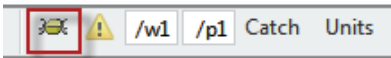
When a command is started from the viewport without accessing the ribbon, you can access additional options by pressing Space or clicking the keyboard indicator.



Click the green arrow on the OMT to see the dialog box for the command (If you press Shift Space when the command starts, the dialog box for the command is directly shown).

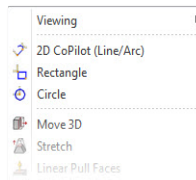


Click the Available Shortcuts browser on the Status Bar to see the currently-active keyboard shortcuts.



Context menu

Shows an extended list of commands when you right-click a pre-selected element.



Learn more about Creo Elements/Direct Modeling

Find training and other information by clicking **Help** in the menu bar.

For more information, visit us on the Web at:
ptc.com/products/creo-elements-direct

ptc.com/products/creo-elements-direct

creo® elements/direct® modeling
QUICK REFERENCE CARD

© 2024, PTC Inc. All rights reserved. Information described herein is furnished for informational use only, is subject to change without notice, and should not be taken as a guarantee, commitment, condition or offer by PTC. PTC, the PTC logo, Product & Service Advantage, Creo, Elements/Direct, Windchill, Mathcad, Arbortext, PTC Integrity, Servigistics, ThingWorx, Product-Cloud and all other PTC product names and logos are trademarks or registered trademarks of PTC and/or its subsidiaries in the United States and other countries. All other product or company names are property of their respective owners.

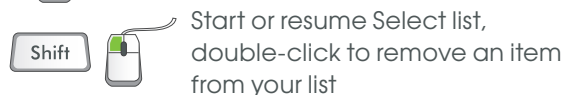


Mouse shortcuts in viewport

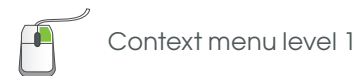
Viewing



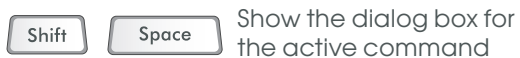
Selection



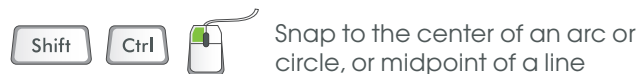
General



General shortcuts



Useful catching shortcuts

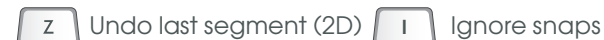


General copilot shortcuts



For more shortcuts, see the Creo Elements/Direct Modeling help.

2D copilot shortcuts

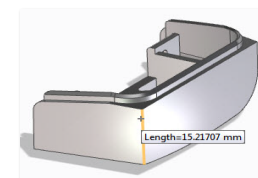


User interaction

Important user interaction concepts:

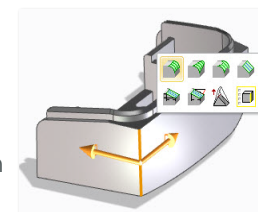
Flyby

When you point to an element (for example, an edge) the element is highlighted and a tooltip appears (OK or Cancel is not visible in the lower-left corner of the viewport).



Pre-selection

When you select an element, a Mini Toolbar opens, which shows the most-likely commands for this element. Where applicable, a drag handle for the first command in the Mini Toolbar also appears (Cancel is visible in the lower-left corner of the viewport).



Action

When you click either a button on the Mini Toolbar or the drag handle, the element is selected and the related command starts (OK and Cancel are visible in the lower-left corner of the viewport).

